

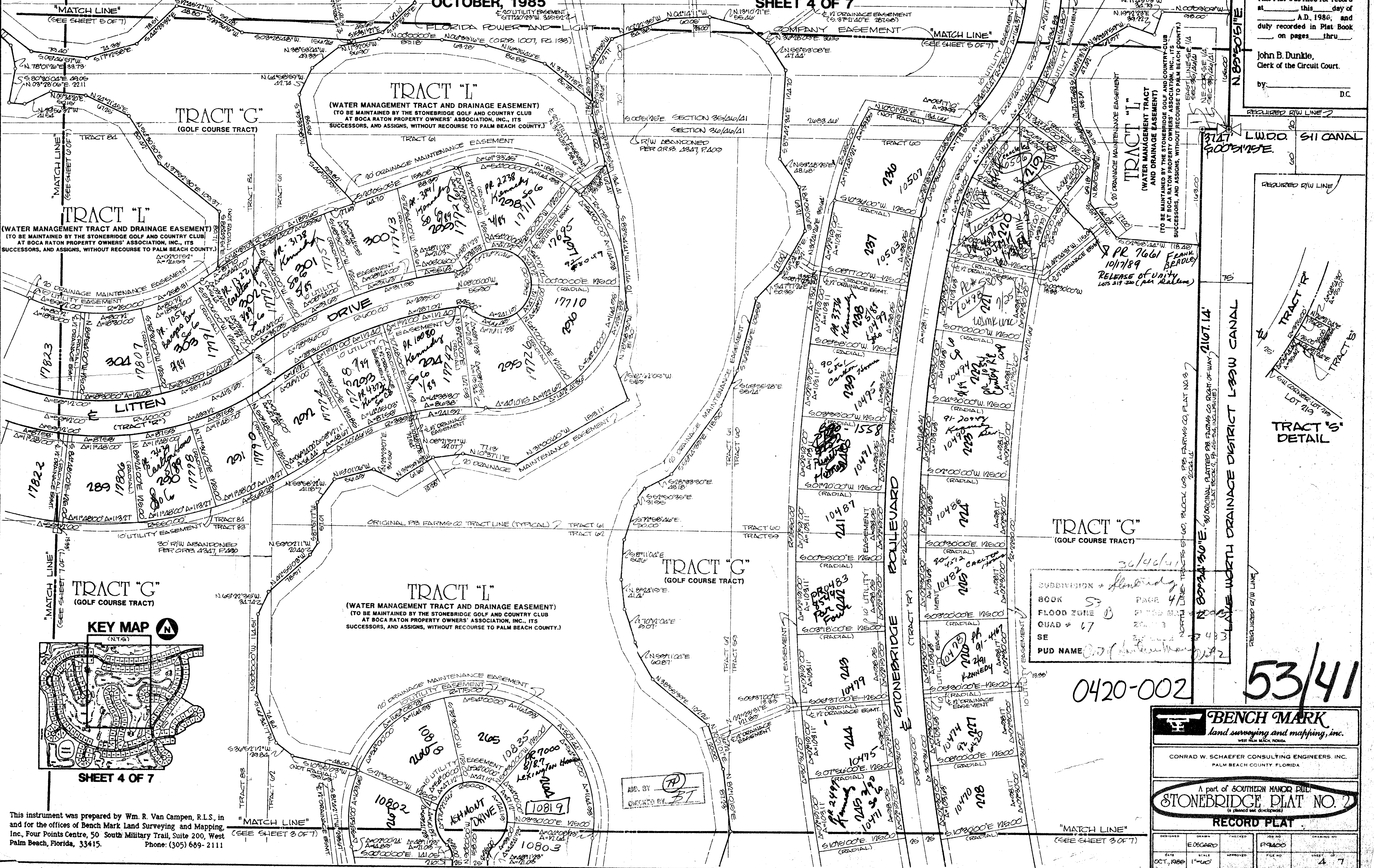
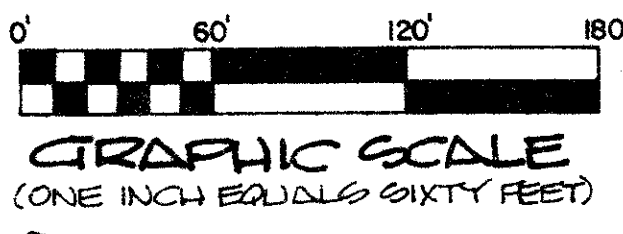
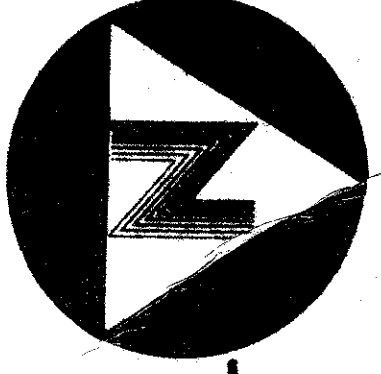
53/41

41

STONEBRIDGE PLAT NO. 2

A part of SOUTHERN MANOR P.U.D.

Lying in the east 1/2 of the southeast 1/4 of Section 35 and being a replat of a portion of the south 1/2 of Block 69, Palm Beach Farms Company, Plat No. 3, Plat Book 2, Pages 45-54 (inclusive), Section 36, all in Township 46 South, Range 41 East, Palm Beach County, Florida, **OCTOBER, 1985** **SHEET 4 OF 7**



State of Florida)
County of Palm Beach)
This Plat was filed for record at _____ this _____ day of _____ A.D. 1985, and duly recorded in Plat Book _____ on pages thru _____
John B. Dunkle,
Clerk of the Circuit Court.
by _____ D.C.

SUBDIVISION *Stonebridge*
BOOK *53* PAGE *41*
FLOOD ZONE *B*
QUAD # *67*
SE
PUD NAME *City of Palm Beach*

0420-002

53/41

BENCH MARK
land surveying and mapping, inc.
CONRAD W. SCHAEFER CONSULTING ENGINEERS, INC.
PALM BEACH COUNTY, FLORIDA

A part of SOUTHERN MANOR P.U.D.
STONEBRIDGE PLAT NO. 2
RECORD PLAT

DESIGNED	E. DECARD	CHECKED	P. MOORE	DRAWING NO.	
DATE	OCT, 1985	SCALE	1"=40'	FILE NO.	47

This instrument was prepared by Wm. R. Van Campen, R.L.S., in and for the offices of Bench Mark Land Surveying and Mapping, Inc., Four Points Centre, 50 South Military Trail, Suite 200, West Palm Beach, Florida, 33415. Phone: (305) 689-2111

DRAWING NUMBER

DRAWING NUMBER

DRAWING NUMBER

PLAN HOLD CORPORATION • IRVINE, CALIFORNIA
RECORDED BY NUMBER 07348

PLAN HOLD CORPORATION • IRVINE, CALIFORNIA
RECORDED BY NUMBER 07348

PLAN HOLD CORPORATION • IRVINE, CALIFORNIA
RECORDED BY NUMBER 07348

PLAN HOLD CORPORATION • IRVINE, CALIFORNIA
RECORDED BY NUMBER 07348